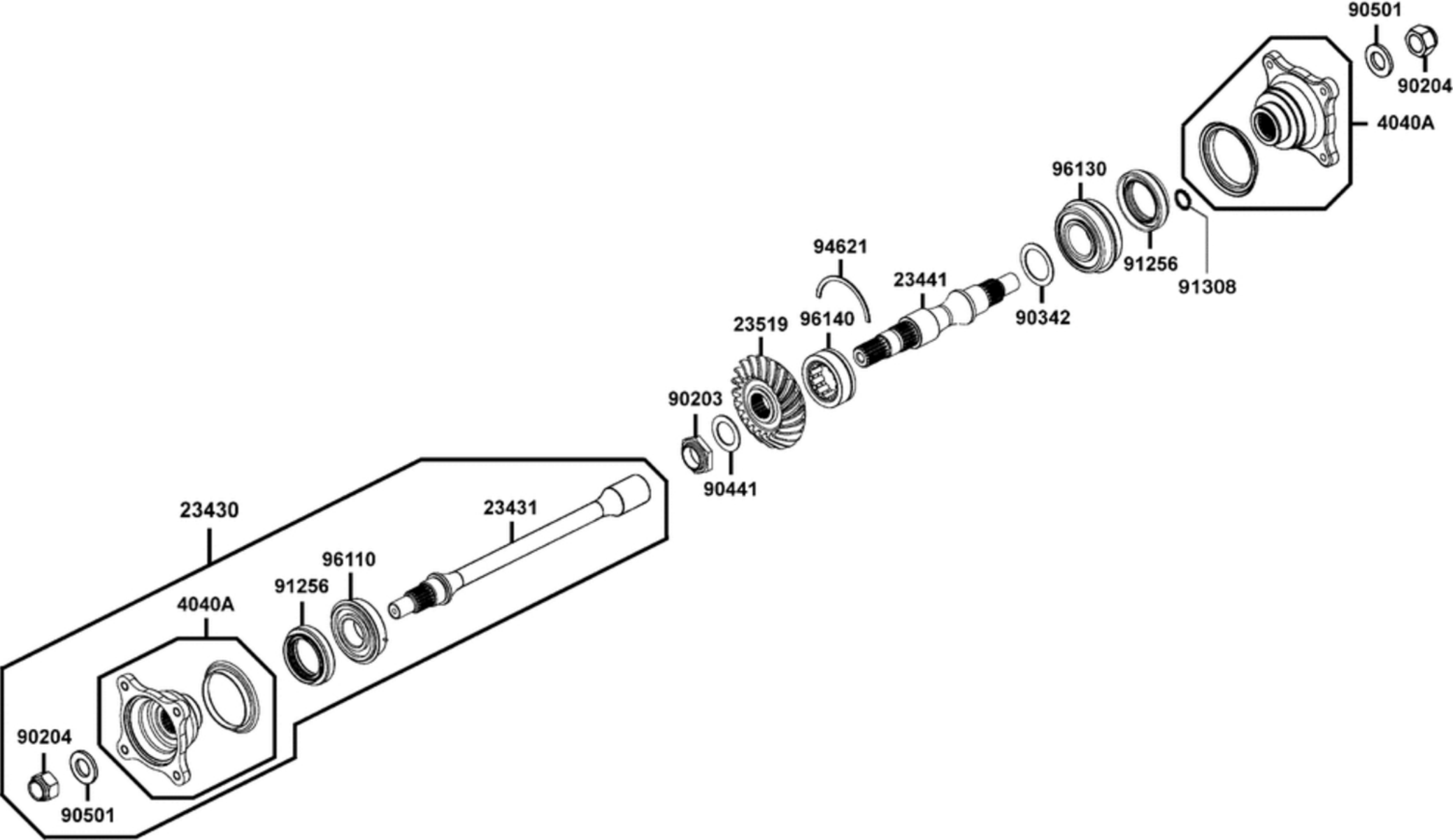


Getriebeausgangswellen



Getriebeausgangswellen

Bildnummer	MSA Nummer	Beschreibung	Herstellernummer
23430-PWB1-900	MV7131	Getriebeingangswelle kpl.	23430-PWB1-900
23431-PWB1-900	MV7480	Getriebeausgangswelle	23431-PWB1-900
23441-PWB1-900	MV7132	Kardanwelle hinten	23441-PWB1-900
23519-PWB1-900	MV7142	Kegelzahnrad	23519-PWB1-900
4040A-PWB1-900	MV7193	Kupplung f. Kardanwelle	4040A-PWB1-900
90203-PWB1-900	MV7321	Mutter M22*1.5	90203-PWB1-900
90204-PWB1-900	MV7322	Mutter G16 SK22/B29/M	90204-PWB1-900
90342-PWB1-900	MV7481	Ausgleichsscheibe	90342-PWB1-900
90441-LBA2-E00	MA3382	U-Scheibe 22x34x1,5	90441-LBA2-E00
90501-KNBN-901	MS5282	U-Scheibe 16x29x3,0	90501-KNBN-901
91256-PWB1-900	MV7349	Wellendichtring 34x52x9	91256-PWB1-900
91308-LCA5-E00	MV2133	O-Ring 18,1x03	91308-LCA5-E00
94621-PWB1-900	MV7380	RING,DRIVEN BEARING	94621-PWB1-900
96110-PWB1-900	MV7395	Kugellager 25x25x15	96110-PWB1-900
96130-PWB1-900	MV7397	Kugellager 25x52x20.6	96130-PWB1-900
96140-PWB1-900	MV7398	Kugellager 30x50x17	96140-PWB1-900